

BELKIN®

Switch-to-Mac Cable User Guide

PM00760-A F4U001



TABLE OF CONTENTS

Table of Contents	SECTIONS	1	2	3	4
Introduction					1
System Requirements.					2
Package Contents.					3
Installation Instructions					6
Install the Switch-to-Mac Utility on your PC					7
Install the Switch-to-Mac Utility on your Mac Computer					7
Finding and Opening your Files on the Mac Computer					10
Handling Multiple Transfers.					11
Uninstalling the Switch-to-Mac Utility					12
Troubleshooting					13
Information					14

INTRODUCTION

Table of Contents

SECTIONS

1

2

3

4

Congratulations and thank you for purchasing the Belkin Switch-to-Mac Cable. This cable will help you quickly and easily transfer important files, folders, and settings from your PC to your Mac® computer. Using the Belkin Switch-to-Mac Cable makes it easy to transfer your music, photos, Internet favorites, Outlook® Express email messages, contacts, and more. Tell the Switch-to-Mac Utility what you would like to transfer, and it will do all the work of finding the files and putting them in their appropriate place on the Mac.

System Requirements

Please read the requirements below to make sure your computers support the use of the Belkin Switch-to-Mac Cable.

System Requirements for PC

- Operating System: Windows® XP SP2 and above, Vista®
- Open USB 2.0 port
- 50MB hard-drive space
- CD-ROM or DVD-ROM drive

System Requirements for Mac

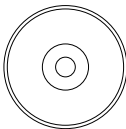
- Operating System: Mac OS® X v10.4 and above
- Open USB 2.0 port
- 50MB hard-drive space
- CD-ROM or DVD-ROM drive

Package Contents

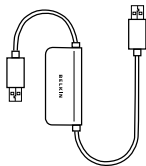
Quick Install Guide: Follow the steps in the Quick Install Guide to get up and running quickly with your Belkin Switch-to-Mac Cable.



Switch-to-Mac Installation CD: Contains the Switch-to-Mac Utility software you will need to use the Switch-to-Mac Cable.



Belkin Switch-to-Mac Cable: Works in conjunction with the Switch-to-Mac Utility to help you transfer your files quickly and easily. The Cable has a status light that lets you know when it is busy transferring data:



Status Light:

Steady pulse – No files are being transferred



Rapid blinking – Files are being transferred



Before Installation

In order to transfer files successfully to a new Mac computer, you need to have opened these applications at least once and accepted their license agreements. For your convenience, the Quick Install Guide includes a checklist to help you keep track of what you want to transfer and which applications you have opened.

On the PC

Internet Explorer® Favorites



My Music/iTunes PC



My Pictures



Outlook Express Email



Outlook Express Contacts



Outlook Calendar



On the Mac

Safari®

iTunes®

iPhoto®

Mail

Address Book

iCal®

You can transfer other files that may not be associated with a particular application:

- My Documents
- Desktop Files
- Desktop Wallpaper
- Custom Folders (you select specific folders to transfer from the PC)

Check iTunes Settings on your Mac Computer

To avoid creating duplicate copies of your music on your Mac, select the following option in iTunes:

1. Open iTunes on your Mac.
2. In the main menu bar, choose “iTunes”.
3. Select “Preferences”.
4. On the “Preferences” screen, click “Advanced”.
5. Uncheck “Copy files to iTunes Music folder when adding to library”.
6. Click “OK”.

INSTALLATION INSTRUCTIONS

Table of Contents

SECTIONS

1

2

3

4

- To install the Switch-to-Mac Utility, you need to have administrator privileges on the Mac and the PC.
- Close all applications and antivirus programs on both the PC and Mac before installing the Switch-to-Mac Utility.
- If you have an Internet connection, make sure your Mac and PC are connected to allow the software to install the latest update.

Install the Switch-to-Mac Utility on your PC

1. Put the Switch-to-Mac CD in your PC. The installation program should run automatically.

If it does not run automatically, do the following:

- Click “Start → My Computer”.
 - Open the Switch-to-Mac Utility CD.
2. Follow the instructions on the screen to complete the installation.
 3. The Switch-to-Mac Utility will start when you complete the installation. On the “Finish” screen, “Launch the Belkin Switch-to-Mac Utility” is checked by default.
 4. Eject the CD and follow the installation instructions for the Mac.

Install the Switch-to-Mac Utility on your Mac Computer

1. Put the Switch-to-Mac CD in your Mac. A CD icon will appear on your desktop.
2. Double-click the CD icon on your desktop.
3. Double-click the folder titled “Mac Install files”.
4. Double-click “Belkin Switch-to-Mac Utility.PKG” to start the installer.
5. Follow the instructions on the screen to complete the installation.

The installer will create a Switch-to-Mac Utility icon on your desktop. Double-click this icon to start the Utility.



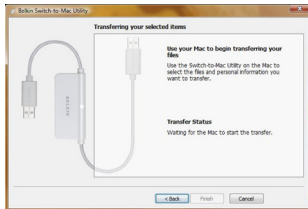
Transferring your Files

New Mac User Tip: You can find all of your installed software in the “Applications” folder of your hard drive.

Important: If you are using a laptop, we recommend that you plug it in before transferring files. Loss of power may result in an incomplete transfer.

Follow these steps to transfer your files:

1. Connect the Switch-to-Mac Cable to the PC and Mac.
2. Use the Switch-to-Mac Utility on the PC to establish a connection with the Mac.
 - Double-click the Belkin Switch-to-Mac Utility on the PC Desktop.
 - Follow the instructions on the screen.
 - When the PC and Mac are connected, you will see the following screen asking you to open the Utility on the Mac.



INSTALLATION INSTRUCTIONS

Table of Contents

SECTIONS

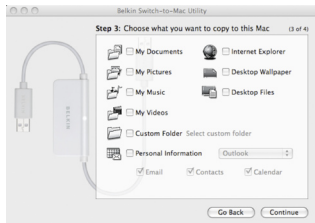
1

2

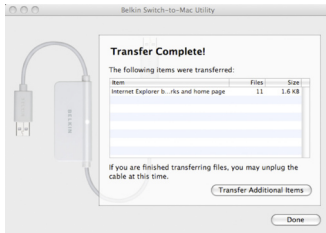
3

4

3. Use the Switch-to-Mac Utility on the Mac to choose the information you would like to transfer.
 - Double-click the Belkin Switch-to-Mac Utility on the Mac desktop.
 - Follow the instructions on the screen.
 - Choose what you would like to transfer from the PC to the Mac.



- Click “Continue” to review your selection and begin the transfer.
- When the transfer is complete, you will see a summary of what was transferred.



Finding and Opening your Files on the Mac Computer

Much of your information will be imported automatically into the associated applications. The applications will open automatically following the transfer.

- iTunes, iPhoto, Mail, and Safari do not require your attention.
- iCal and Address Book will ask you to confirm to import your information.

The rest of your files can be found in these folders:

XP	Vista	Mac OS
My Documents	Documents	//Users/Home/Documents/WindowsPC
My Pictures	Pictures	//Users/Home/Pictures/WindowsPC
My Music	Music	//Users/Home/Music/WindowsPC
My Videos	Videos	//Users/Home/Movies/WindowsPC
Desktop Files	Desktop Files	//Users/Home/Desktop/WindowsPC
Custom Folders	Custom Folders	//Users/Home/WindowsPC
Desktop Wallpaper	Desktop Wallpaper	//Users/Home/Pictures/WindowsPC Wallpaper

Handling Multiple Transfers

The Switch-to-Mac Utility is optimized for transferring from each PC. You can use the Cable to transfer files from two or more PCs to your Mac. Each time you transfer files from your PC to your Mac, a new folder is created for that transfer. For example, if you transfer My Documents from a desktop and laptop PC, you will see two folders in the Mac OS locations:

```
//Users/Home/Documents/WindowsPC
```

```
//Users/Home/Documents/WindowsPC2
```

The Utility also creates a new folder each time you transfer files from the same PC. Consider a scenario where you transfer My Documents from your PC today, and then do so again next week.

You will have the following two folders:

```
//Users/Home/Documents/WindowsPC
```

```
//Users/Home/Documents/WindowsPC2
```

These folders will contain many of the same files, resulting in duplication and wasted hard-drive space. To eliminate duplicate files, complete only one transfer from each PC.

Uninstalling the Switch-to-Mac Utility

To remove the Utility from your computer, follow the steps below:

PC:

1. Disconnect the Switch-to-Mac Cable from your PC.
2. Open the Control Panel and select “Add or Remove Programs” (“Programs and Features” in Windows Vista).
3. Find the Belkin Switch-to-Mac Utility and select “Remove” (“Uninstall” in Windows Vista).

Mac:

1. Disconnect the Switch-to-Mac Cable from your Mac.
2. Open the Macintosh HD icon on your desktop.
3. Open the “Applications” folder and find the Belkin Switch-to-Mac Utility icon.
4. Drag and drop the icon to the trash icon in the dock.

Table of Contents	SECTIONS	1	2	3	4
-------------------	----------	---	---	---	---

The Cable is connected, but the Utility tells me to connect the computers.

1. Close the Switch-to-Mac Utility on each computer.
2. Unplug the Cable from each computer.
3. Restart the Switch-to-Mac Utility on each computer.

After several transfers, my Mac hard drive is filling up.

The Switch-to-Mac Cable is intended to be used only once for each PC that has files you would like to transfer. Transferring from the same PC multiple times can cause duplicate files.

1. Go to the folders below and see if there are multiple folders labeled WindowsPC2, WindowsPC3, etc.
 - //Users/Home/Documents/WindowsPC
 - //Users/Home/Pictures/WindowsPC
 - //Users/Home/Music/WindowsPC
 - //Users/Home/Movies/WindowsPC

2. If there are multiple WindowsPC(1,2,3) folders, there is a good chance that each folder contains many of the same files. Check to see if there are duplicate files between folders.
 - If you have not deleted files from your PC, the most recent WindowsPC folder should have all your most current files.
 - If you are sure that all of your files are present in the most recent WindowsPC folder, you may delete older WindowsPC folders to free up space.
3. If you do not have more than one WindowsPC folder in the locations above, you have not transferred duplicate files.

FCC Statement

DECLARATION OF CONFORMITY WITH FCC RULES FOR ELECTROMAGNETIC COMPATIBILITY

We, Belkin International, Inc., of 501 West Walnut Street, Compton, CA 90220, declare under our sole responsibility that the product:

F4U001

to which this declaration relates:

Complies with Part 15 of the FCC Rules. Operation is subject to the following two conditions: (1) this device may not cause harmful interference, and (2) this device must accept any interference received, including interference that may cause undesired operation.

CE Declaration of Conformity

We, Belkin International, Inc., declare under our sole responsibility that the F4U001, to which this declaration relates, is in conformity with Generic Emissions Standard EN 55022:1998 Class B, EN50081-1 and with Generic Immunity Standard EN50082-1 1992.

Belkin International, Inc. Limited Lifetime Product Warranty

What this warranty covers.

Belkin International, Inc. ("Belkin") warrants to the original purchaser of this Belkin product that the product shall be free of defects in design, assembly, material, or workmanship.

What the period of coverage is.

Belkin warrants the Belkin product for the lifetime of the product.

What will we do to correct problems?

Product Warranty.

Belkin will repair or replace, at its option, any defective product free of charge (except for shipping charges for the product). Belkin reserves the right to discontinue any of its products without notice, and disclaims any limited warranty to repair or replace any such discontinued products. In the event that Belkin is unable to repair or replace the product (for example, because it has been discontinued), Belkin will offer either a refund or a credit toward the purchase of another product from Belkin.com in an amount equal to the purchase price of the product as evidenced on the original purchase receipt as discounted by its natural use.

What is not covered by this warranty?

All above warranties are null and void if the Belkin product is not provided to Belkin for inspection upon Belkin's request at the sole expense of the purchaser, or if Belkin determines that the Belkin product has been improperly installed, altered in any way or tampered with. The Belkin Product Warranty does not protect against acts of God such as flood, lightning, earthquake, war, vandalism, theft, normal-use wear and tear, erosion, depletion, obsolescence, abuse, damage due to low voltage disturbances (i.e., brownouts or sags), non-authorized program, or system equipment modification or alteration.

How to get service.

To get service for your Belkin product you must take the following steps:

1. Contact Belkin International, Inc. at 501 W. Walnut St., Compton CA 90220, Attn: Customer Service, or call (800)-223-5546, within 15 days of the Occurrence. Be prepared to provide the following information:
 - a. The part number of the Belkin product.
 - b. Where you purchased the product.
 - c. When you purchased the product.
 - d. Copy of original receipt.
2. Your Belkin Customer Service Representative will then instruct you on how to forward your receipt and Belkin product and how to proceed with your claim.

Belkin reserves the right to review the damaged Belkin product. All costs of shipping the Belkin product to Belkin for inspection shall be borne solely by the purchaser. If Belkin determines, in its sole discretion, that it is impractical to ship the damaged equipment to Belkin, Belkin may designate, in its sole discretion, an equipment repair facility to inspect and estimate the cost to repair such equipment. The cost, if any, of shipping the equipment to and

from such repair facility and of such estimate shall be borne solely by the purchaser. Damaged equipment must remain available for inspection until the claim is finalized. Whenever claims are settled, Belkin reserves the right to be subrogated under any existing insurance policies the purchaser may have.

How state law relates to the warranty.

THIS WARRANTY CONTAINS THE SOLE WARRANTY OF BELKIN. THERE ARE NO OTHER WARRANTIES, EXPRESSED OR, EXCEPT AS REQUIRED BY LAW, IMPLIED, INCLUDING THE IMPLIED WARRANTY OR CONDITION OF QUALITY, MERCHANTABILITY OR FITNESS FOR A PARTICULAR PURPOSE, AND SUCH IMPLIED WARRANTIES, IF ANY, ARE LIMITED IN DURATION TO THE TERM OF THIS WARRANTY. Some states do not allow limitations on how long an implied warranty lasts, so the above limitations may not apply to you.

IN NO EVENT SHALL BELKIN BE LIABLE FOR INCIDENTAL, SPECIAL, DIRECT, INDIRECT, CONSEQUENTIAL OR MULTIPLE DAMAGES SUCH AS, BUT NOT LIMITED TO, LOST BUSINESS OR PROFITS ARISING OUT OF THE SALE OR USE OF ANY BELKIN PRODUCT, EVEN IF ADVISED OF THE POSSIBILITY OF SUCH DAMAGES.

This warranty gives you specific legal rights, and you may also have other rights, which may vary from state to state. Some states do not allow the exclusion or limitation of incidental, consequential, or other damages, so the above limitations may not apply to you.

BELKIN®

www.belkin.com

Belkin Tech Support

US: 800-223-5546, ext. 2263

310-898-1100, ext. 2263

UK: 0845 607 77 87

Australia: 1800 235 546

New Zealand: 0800 235 546

Singapore: 65 64857620

Europe: www.belkin.com/support

Belkin International, Inc.

501 West Walnut Street

Los Angeles, CA 90220, USA

310-898-1100

310-898-1111 fax

Belkin Ltd.

Express Business Park, Shipton Way

Rushden, NN10 6GL,

United Kingdom

+44 (0) 1933 35 2000

+44 (0) 1933 31 2000 fax

Belkin B.V.

Boeing Avenue 333

1119 PH Schiphol-Rijk,

The Netherlands

+31 (0) 20 654 7300

+31 (0) 20 654 7349 fax

Belkin Ltd.

4 Pioneer Avenue

Tuggerah Business Park

Tuggerah, NSW 2259, Australia

+61 (0) 2 4350 4600

+61 (0) 2 4350 4700 fax

© 2008 Belkin International, Inc. All rights reserved. All trade names are registered trademarks of respective manufacturers listed. Mac, Mac OS, iTunes, iPhoto, iCal, and Safari are trademarks of Apple Inc., registered in the U.S. and other countries. Windows, Windows Vista, Outlook, and Internet Explorer are either registered trademarks or trademarks of Microsoft Corporation in the United States and/or other countries.